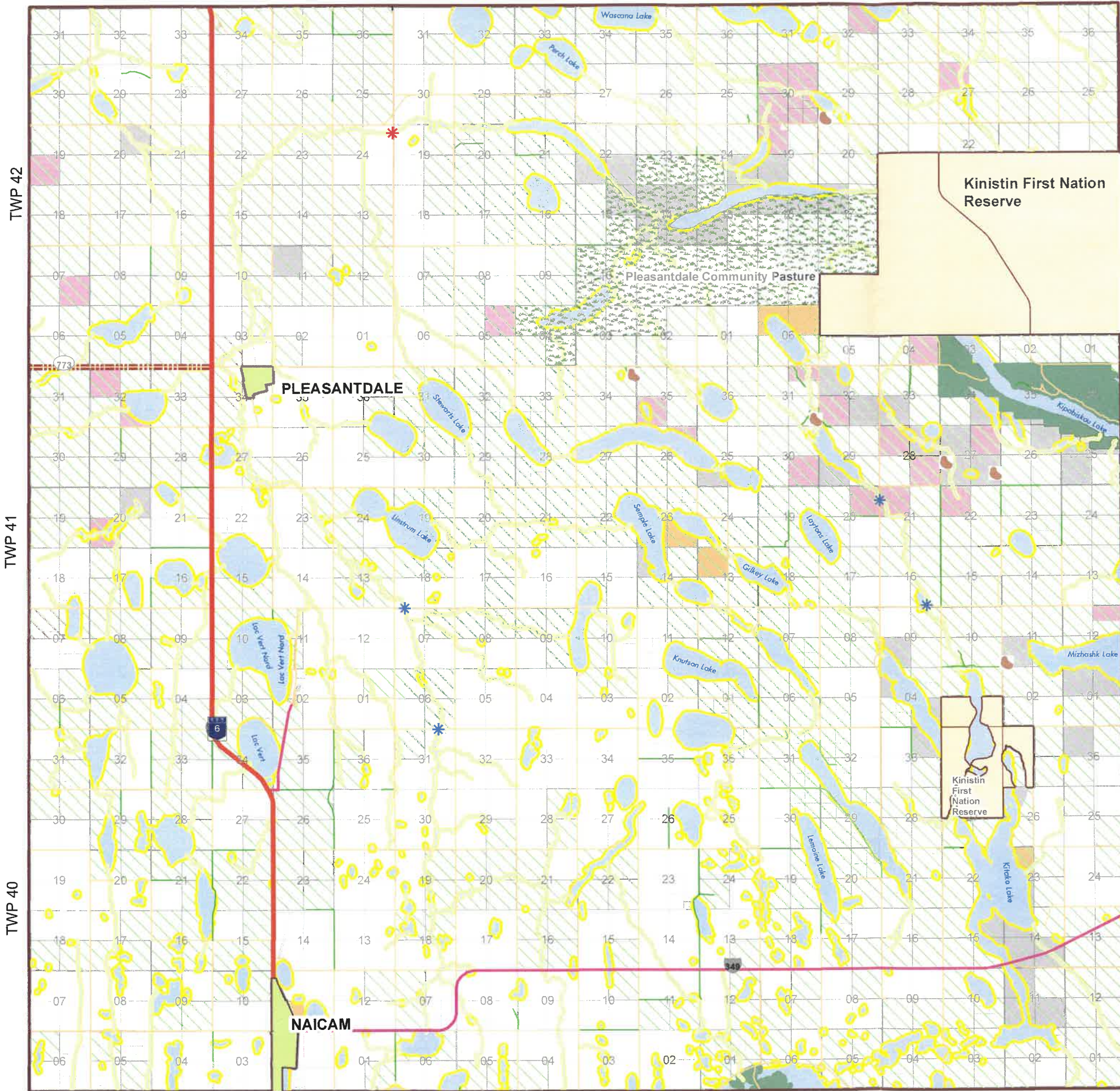


Rural Municipality of Pleasantdale No. 398

Developmental Constraints Map



Legend

- Gravel
- Bridge
- Bridge With Restrictions
- Highway
- Secondary Weight Highway
- Rural Municipal Road
- Resource Road/Trail
- Clearing the Path Corridor
- Water course
- Areas that Require Further Screening for Flood Hazard Potential
- Water body
- First Nations Reserve Lands
- Pasture
- Regional Park
- Heritage Sensitive Area
- Fish and Wildlife Development Fund Land
- Private Conservation Lands
- Wildlife Habitat Protection
- Urban Municipalities
- RM Boundary

APPROVED
REGINA, SASK.
 DEC 07 2020

 Minister of Government Relations

This is the Developmental Constraints Map that accompanies Bylaw No. 04 -2020 adopted by the R.M. of Pleasantdale No. 398

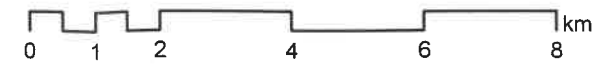
Administrator:

Reeve:



Source: Surface layer geospatial data is from Information Services Corporation, Sask Surface Cadastral Dataset. Reproduced with the permission of Information Services Corporation.

Map is for reference use only and SARM and JDMA are not responsible for any errors or omissions which may be present on map. The information included on the map may have changed since the date of creation and it is up to the user to verify all information presented.



RGE 18

RGE 17

RGE 16 -W2M